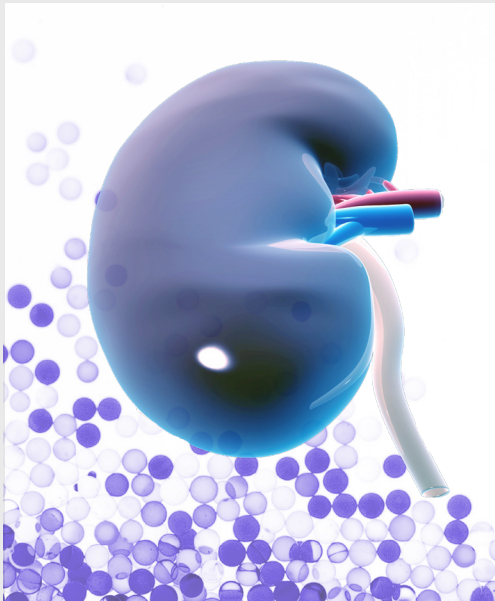


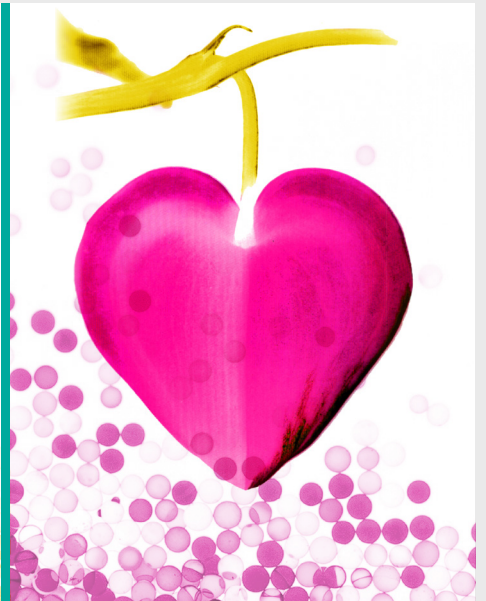
OUR ELISA KITS DESIGNED FOR YOUR CLINICAL & PRE-CLINICAL APPLICATION



QUANTITATIVE



EASY-TO-USE



RELIABLE

Features & Benefits

- ✓ Characterized epitope-mapped antibodies
- ✓ Validated for clinical samples according to ICH and FDA guidelines
- ✓ Human serum based calibrators & controls
- ✓ Proprietary products - in-house R&D and production
- ✓ Personal and competent customer service

SERVICE MEASUREMENTS available





BIOMEDICA develops and produces internationally recognized high quality ELISA kits for clinical research in the field of cardiorenal diseases as well as bone and mineral disorders.

Our customers include numerous top ranking scientific institutions worldwide, well-known CROs and laboratories in the pharmaceutical industry. We are setting the standard for clinical research using serum-based calibrators and controls, thus enabling researchers to collect biologically reliable data. The provided immunoassays are fully validated. Biomedica's experienced and qualified team of professionals provides technical and scientific support.

The majority of our assays are **CE** marked and ready for use in IVD. The company's manufacturing processes comply with ISO 9001:2015 management system standards and conform to GMP/GLP guidelines.

For specific markers, Biomedica has become a market leader with a continuously growing portfolio. A worldwide distribution network has been established for these products as well as an analytical service, which offers customers in-house diagnostic analysis of their samples.

Analytical Testing Service

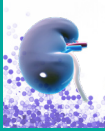
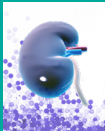
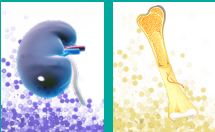
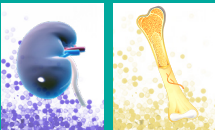
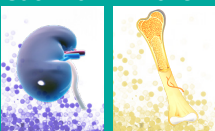
Biomedica offers a comprehensive testing service for all our proprietary ELISAs as well as assays from other brands including Luminex testing services.

As an experienced ELISA assay developer and manufacturer located in the heart of Europe, our staff contribute to every step in the making of our ELISAs, thereby gaining a unique understanding of the assays' performance.

Using our analytical customized testing service, even customers without access to a fully equipped laboratory or skilled staff are able to obtain reliable biomarker results from samples of both human and animal origin.

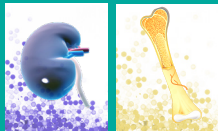
Advantages

- ✓ High-quality services
- ✓ Experienced, trained staff
- ✓ Comprehensive results report
- ✓ Expert sample handling

<p>NEW</p> <p>Human Vanin-1 (Urine) ELISA</p> <p>Cat. No. BI-VAN1U</p> 	<p>Key areas: nephrology</p> <p>Related diseases: acute kidney injury, diabetic nephropathy, drug-induced acute kidney injury, hydronephrosis</p> <p>Measures: human Vanin-1</p> <p>Sample type: urine</p> <p>Assay time: 4.5 hr</p> <p>Sample volume: 10µl / well</p> <p>Use: research use only</p> <p>References: 2 (product specific)</p>
<p>NEW</p> <p>Vanin-1 Mouse/Rat ELISA</p> <p>Cat. No. BI-VAN1MR</p> 	<p>Key areas: nephrology</p> <p>Related diseases: acute kidney injury, diabetic nephropathy, drug-induced acute kidney injury, hydronephrosis</p> <p>Measures: mouse and rat Vanin-1</p> <p>Sample type: mouse and rat serum, plasma and urine</p> <p>Assay time: 4.5 hr</p> <p>Sample volume: 5µl / well</p> <p>Use: research use only</p>
<p>Intact FGF23 ELISA</p> <p>Cat. No. BI-20700</p> 	<p>Key areas: bone and phosphate metabolism, nephrology, cardiovascular homeostasis</p> <p>Related diseases: hypophosphatemia, vitamin D disorders, autosomal dominant hypophosphatemia (ADHR), X-linked hypophosphatemia (XLH), fibrous dysplasia of the bone</p> <p>Measures: intact FGF23</p> <p>Sample type: human plasma (EDTA, citrate, heparin), protocol for human serum, urine and cell culture supernatant</p> <p>Assay time: 3.5 hr</p> <p>Sample volume: 50µl / well</p> <p>Use: CE marked - for IVD use in the EU</p> <p>References: 7 (product specific)</p>
<p>C-terminal FGF23 ELISA</p> <p>Cat. No. BI-20702</p> 	<p>Key areas: bone and phosphate metabolism, nephrology, cardiovascular homeostasis</p> <p>Related diseases: hypophosphatemia, vitamin D disorders, autosomal dominant hypophosphatemia (ADHR), X-linked hypophosphatemia (XLH), fibrous dysplasia of the bone</p> <p>Measures: intact and the C-terminal fragment of FGF23</p> <p>Sample type: human serum and plasma (EDTA, citrate, heparin)</p> <p>Assay time: overnight assay</p> <p>Sample volume: 50µl / well</p> <p>Use: CE marked - for IVD use in the EU</p> <p>References: 32 (product specific)</p>
<p>Sclerostin ELISA</p> <p>Cat. No. BI-20492</p> 	<p>Key areas: bone and mineral metabolism</p> <p>Related diseases: bone and vascular diseases, osteoporosis, cancer induced bone diseases, renal disorders</p> <p>Measures: Wnt-signalling antagonist Sclerostin (SOST)</p> <p>Sample type: human serum and plasma (EDTA, heparin), cell culture and urine protocol</p> <p>Assay time: overnight assay</p> <p>Sample volume: 20µl / well</p> <p>Use: research use only</p> <p>References: 230+ (product specific)</p>

Bioactive Sclerostin ELISA

Cat. No. BI-20472



Key areas:	bone and mineral metabolism
Related diseases:	bone and vascular disease, osteoporosis, cancer induced bone diseases, renal disorders
Measures:	bioactive Sclerostin and Sclerostin fragments; antibody binding occurs in the LRP5/6 binding region
Sample type:	human serum and plasma (EDTA, citrate), cell culture and urine protocol
Assay time:	3.5 hrs
Sample volume:	20µl / well
Use:	research use only
References:	4 (product specific)

DKK-1 ELISA

Cat. No. BI-20413



Key areas:	bone and mineral metabolism
Related diseases:	osteoporosis, rheumatoid arthritis, cancer induced bone diseases, vascular calcification, diabetes
Measures:	Wnt-signalling antagonist Dickkopf-1
Sample type:	human serum
Assay time:	3.5 hrs
Sample volume:	20µl / well
Use:	CE marked – for IVD use in the EU
References:	150+ (product specific)

Periostin ELISA

Cat. No. BI-20433



Key areas:	bone homeostasis, tissue development and repair
Related diseases:	osteoporosis, cancer induced bone diseases, cardiovascular diseases, hypertension, respiratory diseases
Measures:	all known isoforms of human Periostin
Sample type:	human serum and plasma (EDTA, citrate, heparin), cell culture and urine protocol
Assay time:	5.5 hrs
Sample volume:	10µl / well
Use:	research use only
References:	16 (product specific)

Periostin Mouse ELISA

Cat. No. BI-20433MS



Key areas:	bone homeostasis, tissue development and repair
Related diseases:	osteoporosis, cancer induced bone diseases, cardiovascular diseases, hypertension, respiratory diseases
Measures:	mouse Periostin
Sample type:	mouse serum and plasma, cell culture supernatant protocol
Assay time:	4.5 hrs
Sample volume:	≤ 5µl / well
Use:	for pre-clinical use
References:	3 (product specific)

Free sRANKL ELISA

Cat. No. BI-20462



Key areas:	bone and mineral metabolism, thermoregulation
Related diseases:	osteoporosis, diseases with locally increased resorption activity, arthritis, type 2 diabetes, cancer induced bone diseases
Measures:	soluble, uncomplexed receptor RANKL (receptor activator of NF-κB)
Sample type:	human serum and plasma (heparin)
Assay time:	overnight assay
Sample volume:	150µl / well
Use:	CE marked – for IVD use in the EU
References:	270+ (product specific)

Osteoprotegerin (OPG) ELISA

Cat. No. BI-20403



Key areas:	bone and mineral metabolism
Related diseases:	osteoporosis, arthritis, diseases with locally increased resorption activity, cardiovascular disease, vascular calcification
Measures:	monomeric and dimeric Osteoprotegerin
Sample type:	human serum and plasma (EDTA, heparin, citrate)
Assay time:	5.5 hrs
Sample volume:	20µl / well
Use:	CE marked – for IVD use in the EU
References:	220+ (product specific)

Soluble Semaphorin 4D ELISA

Cat. No. BI-20405



Key areas:	bone homeostasis, immune response, cell migration, vascularisation, neural connectivity, tumor progression
Related diseases:	osteoporosis, arthritis, type 2 diabetes, cancer related bone diseases, neurological diseases
Measures:	soluble SEMA4D/CD100
Sample type:	human plasma (EDTA, citrate, heparin), cell culture protocol
Assay time:	4.5 hrs
Sample volume:	10µl / well
Use:	research use only
References:	4 (product specific)

Total Soluble Neuropilin-1 ELISA

Cat. No. BI-20409



Key areas:	immunology, osteology, cardiology, nephrology, oncology
Related diseases:	kidney disease, cardiovascular disease, cancer
Measures:	total soluble NRP1
Sample type:	human serum and plasma (EDTA, citrate, heparin), protocol for cell culture supernatant, urine, and non-human samples
Assay time:	4 hrs
Sample volume:	10µl / well
Use:	research use only
References:	3 (product specific)

Endostatin ELISA

Cat. No. BI-20742



Key areas:	angiogenesis, cardiovascular homeostasis
Related diseases:	atherosclerosis, chronic kidney disease (CKD), ischemia, stroke, micro-vascular injury, renal fibrosis, preeclampsia
Measures:	angiogenesis inhibitor Endostatin
Sample type:	human serum and plasma (EDTA, citrate, heparin)
Assay time:	4.5 hrs
Sample volume:	10µl / sample
Use:	research use only
References:	4 (product specific)

Endostatin Mouse/Rat ELISA

Cat. No. BI-20742MR



Key areas:	angiogenesis, cardiovascular homeostasis
Related diseases:	atherosclerosis, chronic kidney disease (CKD), ischemia, stroke, micro-vascular injury, renal fibrosis, preeclampsia
Measures:	angiogenesis inhibitor Endostatin in mouse and rats
Sample type:	mouse and rat serum and plasma (EDTA, citrate, heparin)
Assay time:	2.5 hrs
Sample volume:	5µl / sample
Use:	for pre-clinical use
References:	2 (product specific)

NT-proCNP ELISA

Cat. No. BI-20812



Key areas: angiogenesis, growth, skeletal development, cardiovascular homeostasis
Related diseases: cardiovascular disease, renal disorders, sepsis, SIRS, pre-eclampsia

Measures: NT-proCNP (AA 24-73)
Sample type: human serum and plasma (EDTA, citrate, heparin), protocol for cell culture supernatant, urine, and non-human samples
Assay time: 4 hrs
Sample volume: 20µl / well
Use: CE marked – for IVD use in the EU
References: 43 (product specific)

NT-proANP ELISA

Cat. No. BI-20892



Key areas: cardiovascular homeostasis, cardiotoxicity in preclinical studies
Related diseases: cardiovascular disease, heart failure, transplants, sepsis

Measures: NT-proANP (AA 1-98)
Sample type: human, rat, mouse, cat and dog serum and plasma (EDTA, heparin), cell culture supernatant, urine
Assay time: 3.5 hrs
Sample volume: 10µl / well
Use: CE marked – for IVD use in the EU
References: 149 (product specific); 14 references: CV safety biomarker in rats)

NT-proBNP ELISA

Cat. No. SK-1204



Key areas: cardiovascular and renal homeostasis, regulation of fatty acid metabolism
Related diseases: obesity, diabetes, renal failure, cardiac impairment, acute myocardial infarction, secondary hypertension

Measures: NT-proBNP (AA 1-76)
Sample type: human serum and plasma (EDTA)
Assay time: 3.5 hrs
Sample volume: 50µl / well
Use: CE marked – for IVD use in the EU
References: 65 (product specific)

BNP fragment ELISA

Cat. No. BI-20852W



Key areas: cardiovascular homeostasis, renal homeostasis, regulation of fatty acid metabolism
Related diseases: obesity, diabetes, renal failure, cardiac impairment, acute myocardial infarction, secondary hypertension

Measures: NT-proBNP (AA 1-76) and all fragments containing AA 8-29 of NT-proBNP
Sample type: human serum and plasma (EDTA, citrate, heparin)
Assay time: overnight assay
Sample volume: 30µl / well
Use: research use only
References: 54 (product specific)




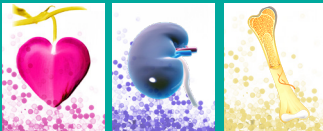

Big Endothelin-1 ELISA

Cat. No. BI-20082H



Key areas: regulation of vascular homeostasis
Related diseases: arterial hypertension and cardiovascular disorders, cardiac hypertrophy, cerebral vasospasm

Measures: Big Endothelin-1 (AA 1-38)
Sample type: human serum and plasma (EDTA, citrate, heparin)
Assay time: 5.5 hrs
Sample volume: 50µl / well
Use: CE marked – for IVD use in the EU
References: 72 (product specific)

<p>NEW</p> <p>Angiotensin-2 ELISA</p> <p>Cat. No. BI-ANG2</p> 	<p>Key areas: vascularisation, angiogenesis, inflammation, micro-vascular injury, renal fibrosis, tumor progression</p> <p>Related diseases: cardiovascular diseases, chronic kidney disease, autoimmune disease, cancer</p> <p>Measures: human Angiotensin-2</p> <p>Sample type: human serum and plasma (EDTA, citrate, heparin)</p> <p>Assay time: 3.5 hrs</p> <p>Sample volume: 20µl / well</p> <p>Use: research use only</p> <p>References: 1 (product specific)</p>
<p>NEW</p> <p>Angiotensin-2 Mouse/Rat ELISA</p> <p>Cat. No. BI-ANG2MR</p> 	<p>Key areas: vascularisation, angiogenesis, inflammation, micro-vascular injury, renal fibrosis, tumor progression</p> <p>Related diseases: cardiovascular disease, chronic kidney disease, autoimmune disease, cancer</p> <p>Measures: mouse and rat Angiotensin-2</p> <p>Sample type: mouse and rat serum and plasma</p> <p>Assay time: 5.5 hrs</p> <p>Sample volume: 5µl / well</p> <p>Use: research use only</p>
<p>NEW</p> <p>IL-6 ELISA</p> <p>Cat. No. BI-IL6</p> 	<p>Key areas: inflammation, cancer, cardiology, nephrology, bone metabolism</p> <p>Related diseases: sepsis, rheumatoid arthritis, systemic juvenile idiopathic arthritis, Castleman's disease, metabolic syndrome, Covid-19</p> <p>Measures: human IL-6</p> <p>Sample type: serum, plasma (EDTA, heparin, citrate), cc supernatant, urine</p> <p>Assay time: 4.5 hrs</p> <p>Sample volume: 100µl / well</p> <p>Use: research use only</p>
<p>NEW</p> <p>VEGF ELISA</p> <p>Cat. No. BI-VEGF</p> 	<p>Key areas: cancer, angiogenesis, inflammation, cardiology, bone metabolism</p> <p>Related diseases: rheumatoid arthritis, psoriasis, psoriatic arthritis, diabetes and diabetic kidney disease, diabetic retinopathy, obesity</p> <p>Measures: human VEGF (all circulating isoforms incl. VEGF165b)</p> <p>Sample type: serum, plasma (EDTA, heparin), cc supernatant, urine</p> <p>Assay time: 4.5 hrs</p> <p>Sample volume: 10µl / well</p> <p>Use: research use only</p>
<p>OxyStat Assay</p> <p>Cat. No. BI-5007</p> 	<p>Key areas: oxidative stress, cardiology</p> <p>Related diseases: cardiovascular diseases</p> <p>Measures: biological peroxides</p> <p>Sample type: human serum, EDTA plasma, biological fluids</p> <p>Assay time: 15 min</p> <p>Sample volume: 10µl / well</p> <p>Use: CE marked – for IVD use in the EU</p> <p>References: 51 (product specific)</p>

**MDA-oxLDL
ELISA**

Cat. No. BI-20022



Key areas: oxidative stress, cardiology

Related diseases: cardiovascular diseases

Measures: malondialdehyde (MDA)-modified ApoB LDL
Sample type: human serum and plasma (EDTA, citrate, heparin)
Assay time: 3.5 hrs
Sample volume: 20µl / well
Use: research use only
References: 26 (product specific)

**oLAB ELISA
(Anti oxidized LDL
autoantibodies)**

Cat. No. BI-20032



Key areas: oxidative stress, cardiology

Related diseases: cardiovascular diseases

Measures: autoantibodies to oxidized human low density lipoprotein (LDL)
Sample type: human serum
Assay time: 2 hrs
Sample volume: 20µl / well
Use: CE marked – for IVD use in the EU
References: 68 (product specific)



www.bmgrp.com

BIOMEDICA Medizinprodukte GmbH

Divischgasse 4 · 1210 Vienna · Austria · EUROPE · www.bmgrp.com
 T +43 1 291 07 45 · F +43 1 291 07 6389 · info@bmgrp.com

PL-202105